

# 安裝尺寸圖

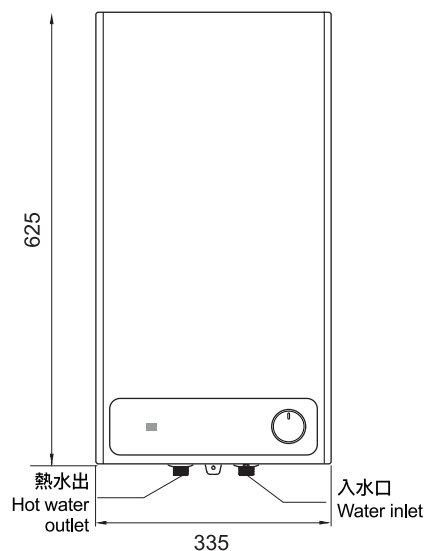
## Installation Diagram

型號 Model :  
BWH-17S

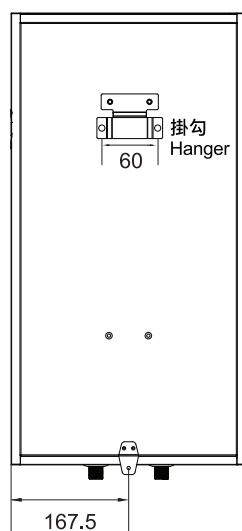
尺寸 Size : (W) x (D) x (H) mm  
闊335 x 深215 x 高625 毫米

( Unit : mm )  
尺寸單位：毫米

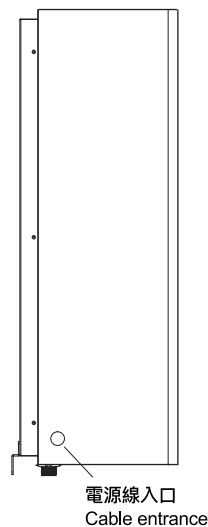
Front view 正面圖



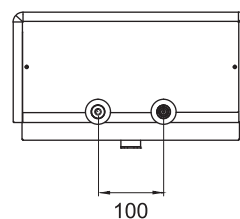
Back view 背面圖



Side view 側面圖

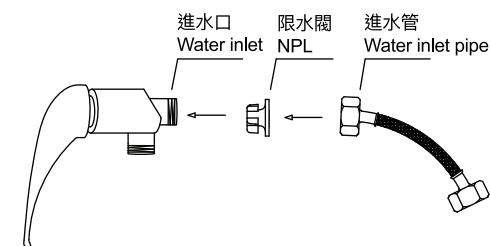


Top view 機底平面圖

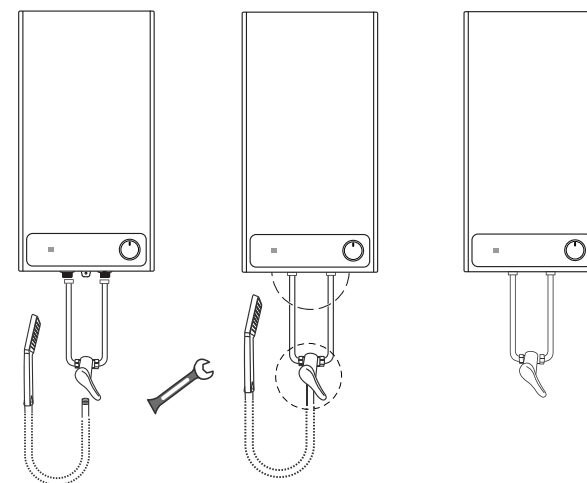


NPL installation, please follow this:

### NPL Installation Diagram



- 安裝注意事項：黃色面帶有黑色膠圈方向對應進水管
- Remark for installation:  
Yellow side with the black convex jacket should be connected to water inlet pipe



\*Illustration is not drawn to scale 圖示並不是按比例繪製

## ! CAUTIONS 注意

### 安裝時須注意

- 安裝全過程必須採用原廠配件，如違反指示將會失去保養效用。
- 如若因違反指示進行安裝或維修，從而引至任何損壞或傷亡，代理商一概不負責。
- 一切安裝及維修必須由合資格技工進行。
- 用戶必需安裝雙刀開關分掣（接點距離不少於3mm空隙及符合IEC標準）由總電源分配箱之MCB埠至熱水爐之間用以緊急開關，而此分掣必需安裝於浴室外及接駁安全地線。

### Pre - Installation Notice

- Installation and inspection should be processed by a licensed technician using the supplied parts.
- Sole Distributor is not responsible for any defect or damage caused by incorrect or unauthorized installation.
- A double poles switchgear (complied with IEC standard with >3mm clearance of contact) must be installed at outside bathroom between distributor to heater for disconnect the supply.