



新康貿易有限公司

香港新界屯門建泰街6號恒威工業中心B1座17樓B1室

NEWIDE TRADING LIMITED

FLAT B1, 17/F, BLOCK B1
HANG WAI INDUSTRIAL CENTRE,
6 KIN TAI STREET, TUEN MUN, N.T.

Tel : (852) 2461 1223 | 2642 5223 Fax : (852) 2469 2882

14-210-030223



Operating Instruction 使用說明書

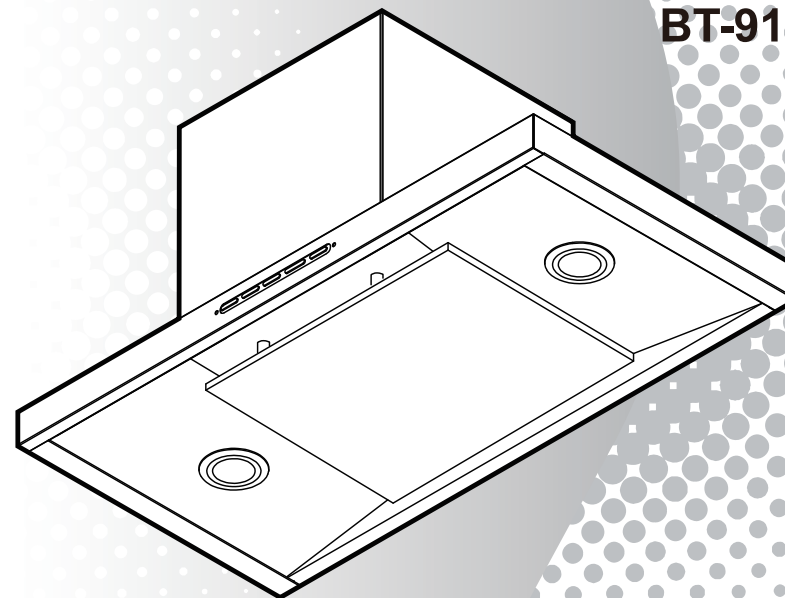
KITCHEN RANGE HOOD

抽油煙機

Model No.

BT-700S1

BT-910S1



Thank you very much for purchasing Bondini product.
非常感謝您購買了Bondini產品。

Before operating this range hood, please read these instructions carefully and completely, paying special attentions to notes pertaining to your particular model.

在使用此抽油煙機前，請仔細閱讀全本使用說明書，並留心有關型號的注意事項。

CONTENTS 目錄

1	安裝原則	2
	PREPARATION FOR INSTALLATION	7
2	安裝施工說明	3
	INSTALLATION PROCEDURE	8
3	使用方法	4
	OPERATION OF YOUR MACHINE	9
4	使用注意事項	5
	SAFETY GUIDE	10
5	保養	5
	MAINTENANCE	10
6	異常狀況之處理	6
	TROUBLE SHOOTING	11

*The illustration in this booklet is just for reference, real machine status should be considered.
本說明書內示意圖樣僅供參考，實際以實體為主。

Dear Customers 親愛的顧客

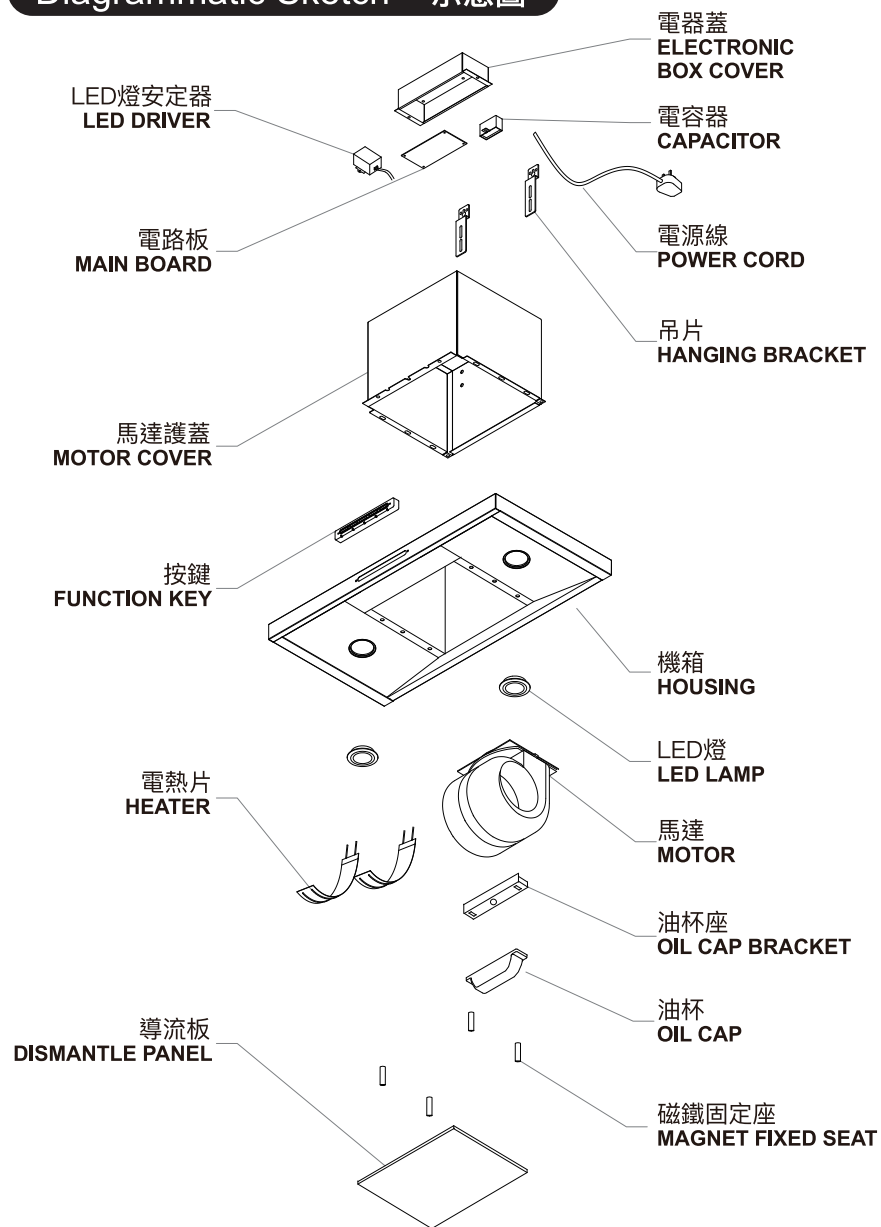
- Thanks for purchasing Range Hood. We are always glad to offer you quality service as well as best improvements at noise and wind-exhaust efficiency.
(In order to let you more enjoyable and safer by using our machines).
- 謝謝您的惠顧，讓我們有機會為您府上提供抽油煙機產品，本系列產品除維持一貫服務品質外，並針對噪音、排油煙力等問題加以改良讓您用得更舒適、更安心。
- Any questions is considered about our products or for further services, kindly please contact service department of our agent.
- 若對本產品有任何使用上的疑問，或需要服務的地方，請洽代理商服務部。

! CAUTIONS 注意

- This appliance is not intended for use by persons (including children) with reduced physical, sensory or mental capabilities, or lack of experience and knowledge. Unless they have been given supervision or instruction concerning use of the appliance by a person responsible for their safety.
 - Children should be supervised to ensure that they do not play with the appliance.
 - CAUTION :** Accessible parts may become hot when used with cooking appliances.
 - 本裝置不適合供給肢體、智能、行為能力或是精神狀態有障礙的人使用(包括孩子)，除非他人給了他們關於對裝置的用途的監督或指示，並對他們的安全負責。
 - 孩子應該被監督以確保他們不使用並把玩該裝置。
- 注意：當烹調器具在使用時，容易接近的零件也許變得熱。

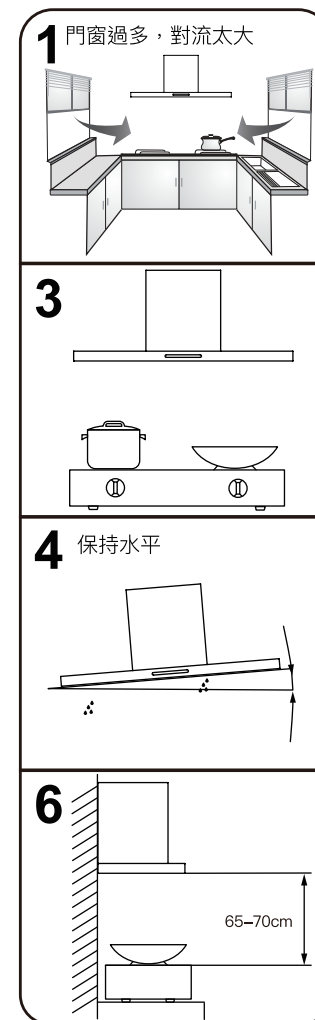
Parts Identification 圖解

Diagrammatic Sketch 示意圖



1 安裝原則

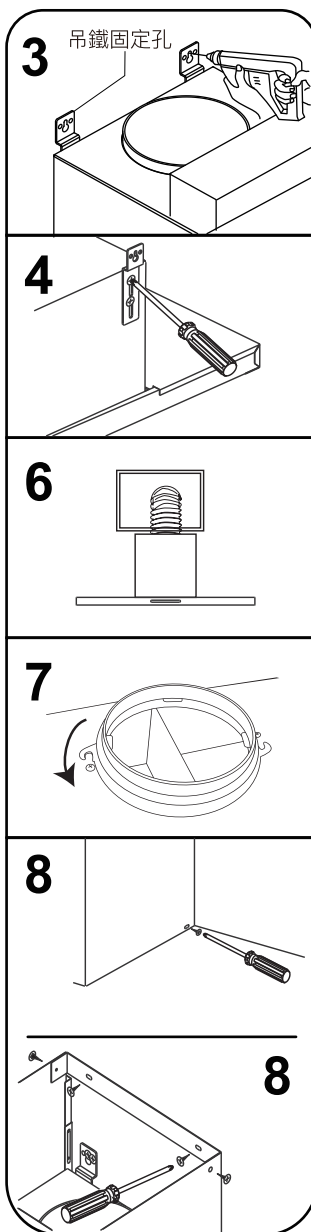
- 1 抽油煙機安裝之周圍，應避免門窗過多而產生空氣對流太大，則無法發揮其除排煙之效果。
- 2 當抽油煙機與其他煮食爐同時操作時，請保持室內空氣流通。
- 3 抽油煙機安裝於爐臺之正上方。
- 4 安裝後之機體不能歪斜應保持水平，否則集油盤或集油杯內積油將傾向單邊而溢出機體外。
- 5 排風出口至機體之距離，應盡量避免過長，以免氣流擠壓於管內，影響其排風效果。
- 6 抽油煙機之安裝高度是以爐面至機體下方之距離為準，參考高度為 65-70cm。
- 7 排風管安裝時，不得與其他氣體燃料爐之排放口安裝在同一煙囪之通道內。
- 8 固定抽油煙機時，需將螺絲鎖緊固定於牆上，不可將油煙機掛在螺絲上。



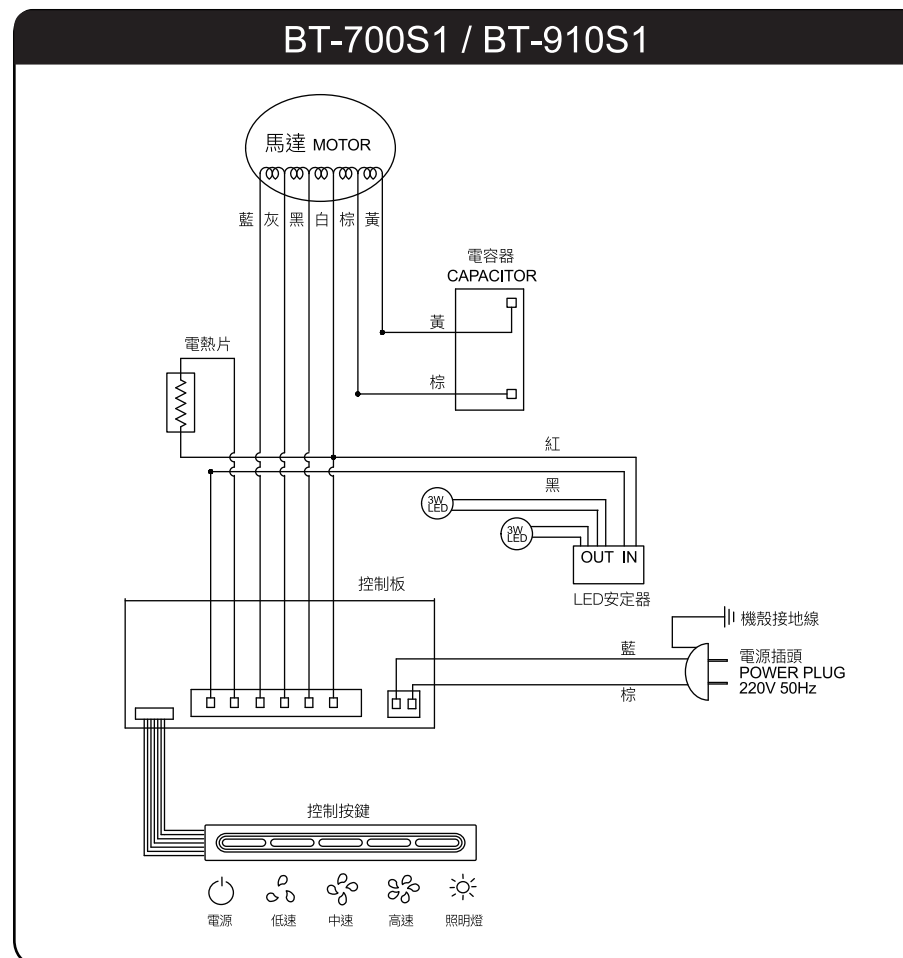
2 安裝施工說明

- 1 打開紙箱檢視保證書、說明書、排風管和風管座等附屬配件是否齊全。
- 2 安裝前先接上電源，測試按鍵上之各項功能是否正常運作(馬達運轉、照明)。
- 3 在已選定的安裝位置上，以1/4"鑽頭鑽孔，將孔塞(俗稱塑膠栓)塞入孔內，並於配合吊鐵鑰匙孔之孔位鎖上螺釘。
- 4 調整機體兩側之掛鉤(吊鐵)，將機體懸掛於螺釘上，懸掛後，必需於吊鐵圓孔處再鎖上一螺釘與牆壁固定。
- 5 懸掛後，機體要保持一定水平。
(安裝原則裡第3項已敘述)
- 6 排風管之安裝位置：
 - (一)選擇最近可通向室外之窗戶，裝設排風管穿窗而出。
 - (二)或選可通向室外之牆壁(非隔間牆壁)打洞，裝設排風管穿牆而出。
- 7 裝設排風管：
 - 將排風管之一端套入合適之風管座，並將風管座端固定於機體出風口及排風管另一端固定於排氣上。
- 8 裝設風管蓋：
 - 鎖上風管蓋兩側之螺絲。
 - 調整所需高度並將風管蓋固定片鎖上所需位置。

註：有關排風管之裝設，以上說明僅供參考，施工需請專業人員處理或洽代理商。



Circuit Diagram 配線圖





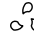
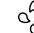
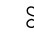

6 Troubleshooting

- When there is a problem with the machine and is unable to solve by user, turn off the machine and contact service centre.
- Disconnect the power supply whenever there is a malfunction phenomenon.

Status	Causes and Methods of Repairing
Power supply cord is broken	<ul style="list-style-type: none"> • Please contact our service centre.
The bulb works but the motor doesn't run	<ul style="list-style-type: none"> • Please contact our service centre.
Oil leaks from the housing cover	<ul style="list-style-type: none"> • Check if the oil cup is full. • Check if the oil cup is broken, or it is in right position.
Machine vibration	<ul style="list-style-type: none"> • If the machine is screwed tightly. • If the machine is in level position.
Suction becomes weak	<ul style="list-style-type: none"> • The distance between range hood and range top is too far away. • Too many doors or windows around the hood to cause convection. • The machine is installed at front of window. • Please refer to the Installation Procedures and Safety Guides for good installation.

3 使用方法

1 開始使用時，可依所需觸按機體前方之開關按鍵。

型號	按鍵說明	停止運轉
BT-700S1 BT-910S1	  電源  低速  中速  高速  照明燈	—

自動除油機型：

- 馬達持續運轉超過30分鐘關機後，電熱除油功能會自動除油15分鐘後，馬達會再運轉1分鐘關機。

手動電熱除油：

- 按電源開關2秒後即可進入電熱除油裝置。

2 集油杯之裝拆：

- 當集油盤(或集油杯)內所盛之油汁已達八分滿，需隨時將油汁倒掉後用清潔劑清洗，再裝回原固定位置。
- 每台油煙機附有一個油杯。
- 集油杯取出時只需用手將集油杯往下拉出，裝回時將集油杯置之集油槽中，推入至底即可。

3 本機可作排風機使用：

- 本機不僅使用排除廚房之油煙氣，平時亦可作排風機使用，調節並維持室內清新的空氣。

4 清潔方法：

- 先將機身底板卸下，先取下集油杯。
- 清潔時，內外表面可用軟布沾中性清潔劑擦拭，並避免刮花機體內外表面。
- 清潔時，按上述相反的程序裝上底板。



注意

- 清潔抽油煙機前應先拔下插頭。請檢查底板上掛鉤與機體是否牢固，以策安全。

4 使用注意事項

- 1 電潔插座必須安裝接地線。
- 2 清潔抽油煙機前應先關掉電源，並拔下插頭。
- 3 抽油煙機使用時，可將大部份油煙抽出室外，故此油杯油污存量很少。
- 4 請勿直接潑水噴淋機體以免損壞電器機件。

5 保養

- 1 為發揮本機最佳性能，延長其使用壽命，應經常注意保養。
- 2 保養維修時應將插頭拔掉，切斷電源！
 - (一) 保養重於維修：
 - 常保機體外部潔淨，使用後請用乾布或沾有中性清潔劑之抹布，擦拭機體外殼與底板，經常保持乾淨以維護其美觀及衛生。
 - (二) 清除積存之油污：
 - 當集油盤(或集油杯)內所盛之油汁已達八分滿，須隨時將油汁倒掉，以免有溢出的可能。
(集油盤、集油杯如何拆裝已於使用方法中敘述。)

4 Safety Guide


- 1 The range hood must be earthed.
- 2 Disconnect power supply before cleaning the hood.
- 3 Most of soot will be exhausted through the pipe to outdoor when range hood is in operation, so only negligible oil will be left in the oil cup.
- 4 Do not splash or spray the range hood with water, the machine may damage.

5 Maintenance

- 1 **Maintenance is more Important than Replacement.**
Good maintenance allows the best performance of machine and prolongs it's operation life. Please take good care of your machine.
- 2 **Turn off power supply before maintenance.**
 - A. Always keeps machine clean.
 - After each use, please wipe machine housing and bottom cover plate with a dry cloth or a wet cloth with mild detergent.
 - B. Empty dirty oil cup when it is 80% full of oil, as to avoid overflow.
(Please see front page mentioning the installation and dismantling of oil collectors)

3 Operation of Your Machine

1 Follow your different enquiries to operate the switch as follows:

Models	Operation	Stop Moving
BT-700S1 BT-910S1	 Off Low High Turbo Light	—

Automatic thermal degreasing operation:

- After turning off the unit, if it been continuous operates over 30 minutes then automatic thermal decreasing function will start the heating feature for 15 minutes, and the motor will restart operate 1 minutes at high speed then turn off the unit.

Manual control thermal degreasing:

- Press Power ON/OFF switch for 2 seconds in order to operate the thermal degreasing.

2 Installation and Dismantling of Oil Cup :

- Empty dirty oil cup when it is more than 80% full. Pour out dirty oil and clean the cup with detergent, then put it back to it's original position.
- To remove oil cup, hold the bottom and pull down along the slot. Reverse the procedure to put it back.
- There are one plastic oil cup enclosed with the machine.

3 This machine can improve air quality:

- This machine not only can remove soot and smoke in the kitchen, but also can be used as a ventilator to enhance indoor air circulation.

4 Cleaning :

- Press the release button and detach the bottom cover plate.
- Detach the oil cup.
- Use soft cloth to clean the inner and outer surface with mild liquid detergent and then wipe with wet cloth. Avoid using any harsh brush to rub the machine body.
- After cleaning, assemble the parts in reverse procedures as mentioned above.

! CAUTIONS

- Make sure that the lower bottom cover is securely hooked with the hood body.

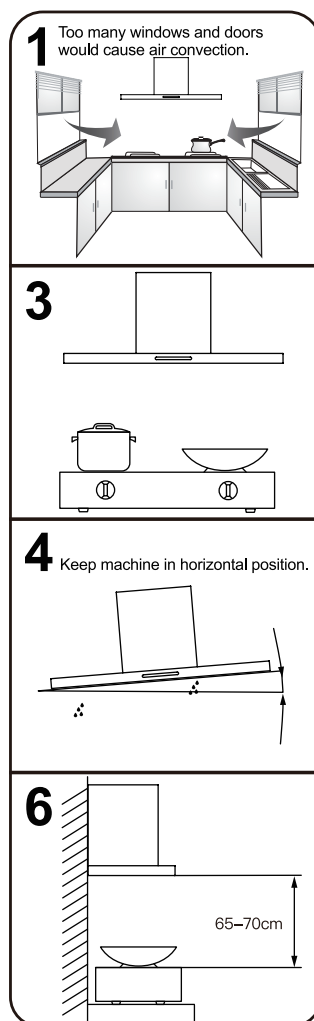
6 異常狀況之處理

- 使用中發現異常狀況時，如未能自行解決問題，請將開關電源和拔掉插頭，並聯絡維修中心服務。
- 處理異常狀況時，請先拔掉插頭。

狀況	原因及處置方法
電源線損壞	• 請聯絡維修中心。
燈亮馬達不轉	• 請聯絡維修中心。
底板漏油	• 油杯是否滿溢。 • 油杯是否有破裂，油杯安裝是否妥當。
機動震動	• 查看機身是否安裝妥當，沒任何鬆脫。 • 查看機身安裝是否左、右方高低不平。
吸力不強	• 抽油煙機與爐面的距離太高。 • 抽油煙機周圍環境門窗通風多，對流太大。 • 抽油煙機裝置在窗戶處。 • 參考安裝原則及安裝注意事項進行安裝。

1 Preparation for Installation

- 1 If there are too many windows and doors in the kitchen, convection may cause and it will downgrade the performance of the machine.
- 2 Maintain adequate ventilation of room when the range hood operate with gas or electric stove and other heating appliances at the same time.
- 3 Machine shall be installed on wall or underneath a cabinet.
- 4 The machine must be in level position, otherwise grease in oil cup may leak.
- 5 Distance between exhaust vent and machine shall be suitable and kept as short as possible so that the efficiency of exhaustion will not be affected.
- 6 Keep a distance of 65-70cm between cooking surface and the front hood of the machine.
- 7 Exhaust vent must not be discharged into a duct which is used also for other cooking or heating appliances.
- 8 Range Hood must be installed by firmly attaching to solid wall with screws.



2 Installation Procedures

- 1 Check it warranty card, instruction booklet, pipe adapter and so forth accessories are in carton box.
- 2 Before installation, check every functions of each switch are in good condition (such as motor running, illumination).

- 3 Select suitable position for installation, drill hole on the wall by using 1/4" thread bit and put screw lock inside the hole to fit screw with matching hanging hole.

- 4 Adjust hangers of both sides, hang machine onto screws.

- 5 The machine must be in level position.

- 6 **Installation position of Exhaust Vent :**
 - Exhaust vent must attach and penetrate the closest window above the machine.

- 7 **Installation of Exhaust Pipe :**
 - Insert one side of exhaust pipe to the adapter fitted on the top vent of machine. Then, another side of pipe is fitted to go through exhaust hole.

- 8 **Installation of Duct Cover :**
 - Secure it with the Duct Cover screws provided. Adjust the mounting bracket to your desired height.
 - Drilling hold on the wall by using 1/4" thread bit, secure the mounting bracket with screws provided.

Note and Importance :

- Installation must carry out by a qualified and licensed technician.

