



**新康貿易有限公司**

香港新界屯門建泰街6號恒威工業中心B1座17樓B1室

**NEWIDE TRADING LIMITED**

FLAT B1, 17/F, BLOCK B1  
HANG WAI INDUSTRIAL CENTRE,  
6 KIN TAI STREET, TUEN MUN, N.T.

Tel : (852) 2461 1223 | 2642 5223 Fax : (852) 2469 2882

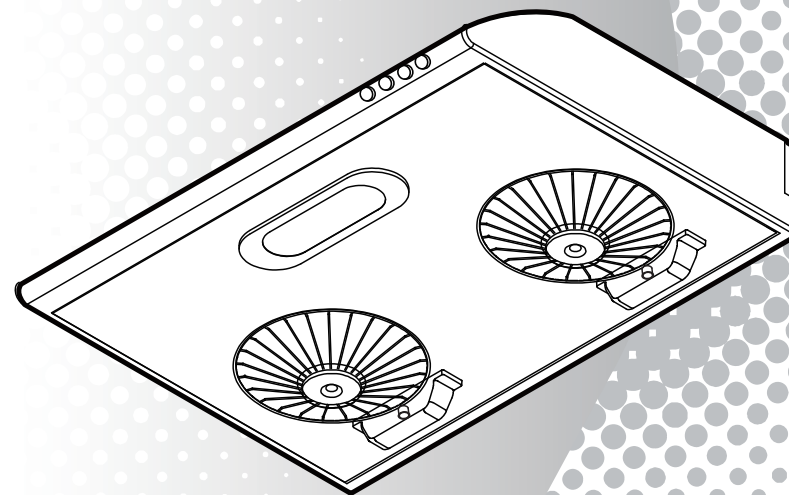
14-250-110712



# Operating Instruction 使用說明書

**KITCHEN RANGE HOOD**  
抽油煙機

Model No.  
**BRH-110S**



Thank you very much for purchasing Bondini product.  
非常感謝您購買了Bondini產品。

Before operating this range hood, please read these instructions carefully and completely, paying special attentions to notes pertaining to your particular model.

在使用此抽油煙機前，請仔細閱讀全本使用說明書，並留心有關型號的注意事項。

# CONTENTS 目錄

1	安裝原則	2
	PREPARATION FOR INSTALLATION	7
2	安裝施工說明	3
	INSTALLATION PROCEDURE	8
3	使用方法	4
	OPERATION OF YOUR MACHINE	9
4	使用注意事項	5
	SAFETY GUIDE	10
5	保養	5
	MAINTENANCE	10
6	異常狀況之處理	6
	TROUBLE SHOOTING	11

\*The illustration in this booklet is just for reference, real machine status should be considered.  
本說明書內示意圖樣僅供參考，實際以實體為主。

## Dear Customers 親愛的顧客

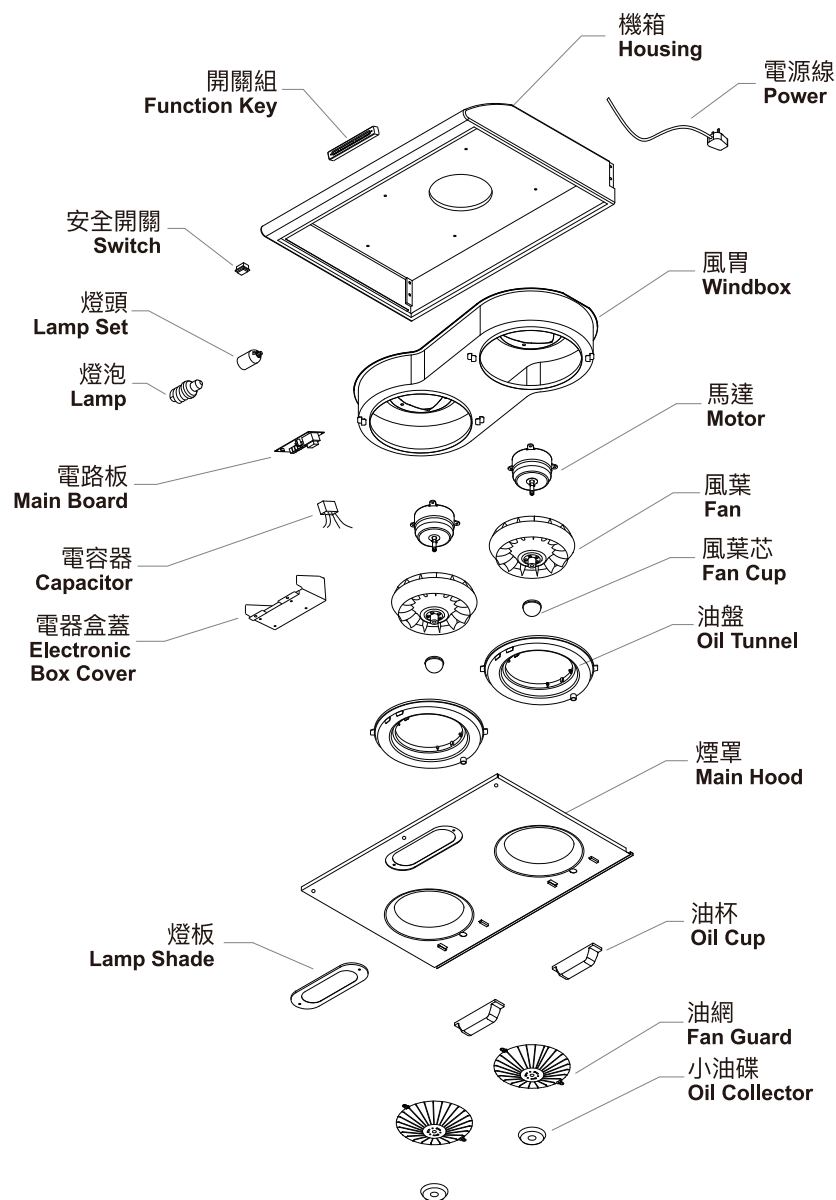
- Thanks for purchasing Range Hood. We are always glad to offer you quality service as well as best improvements at noise and wind-exhaust efficiency.  
(In order to let you more enjoyable and safer by using our machines).
- 謝謝您的惠顧，讓我們有機會為您府上提供抽油煙機產品，本系列產品除維持一貫服務品質外，並針對噪音、排油煙力等問題加以改良讓您用得更舒適、更安心。
- Any questions is considered about our products or for further services, kindly please contact service department of our agent.
- 若對本產品有任何使用上的疑問，或需要服務的地方，請洽代理商服務部。

## ! CAUTIONS 注意

- This appliance is not intended for use by persons (including children) with reduced physical, sensory or mental capabilities, or lack of experience and knowledge. Unless they have been given supervision or instruction concerning use of the appliance by a person responsible for their safety.
  - Children should be supervised to ensure that they do not play with the appliance.
  - CAUTION :** Accessible parts may become hot when used with cooking appliances.
  - 本裝置不適合供給肢體、智能、行為能力或是精神狀態有障礙的人使用(包括孩子)，除非他人給了他們關於對裝置的用途的監督或指示，並對他們的安全負責。
  - 孩子應該被監督以確保他們不使用並把玩該裝置。
- 注意：當烹調器具在使用時，容易接近的零件也許變得熱。

# Parts Identification 圖解

## Diagrammatic Sketch 示意圖



# 1 安裝原則

**1** 抽油煙機安裝之周圍，應避免門窗過多而產生空氣對流太大，則無法發揮其除排煙之效果。

**2** 當抽油煙機與其他煮食爐同時操作時，請保持室內空氣流通。

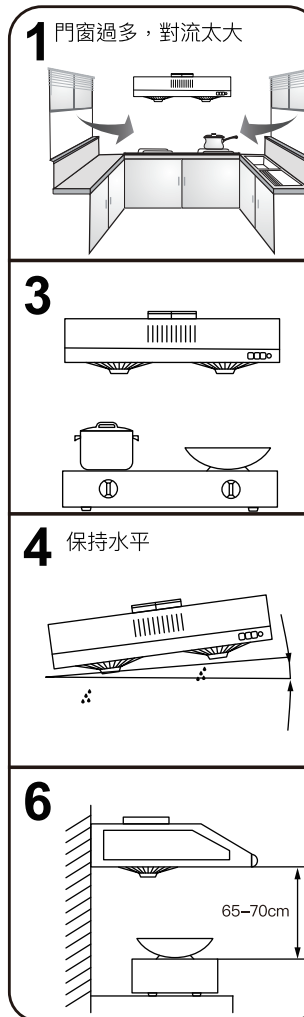
**3** 抽油煙機安裝於爐臺之正上方。

**4** 安裝後之機體不能歪斜應保持水平，否則集油盤或集油杯內積油將傾向單邊而溢出機體外。

**5** 排風出口至機體之距離，應盡量避免過長，以免氣流擠壓於管內，影響其排風效果。

**6** 抽油煙機之安裝高度是以爐面至機體前緣端面之距離，參考高度為 65-70cm。

**7** 排風管安裝時，不得與其他氣體燃料爐之排放口安裝在同一煙囪之通道內。

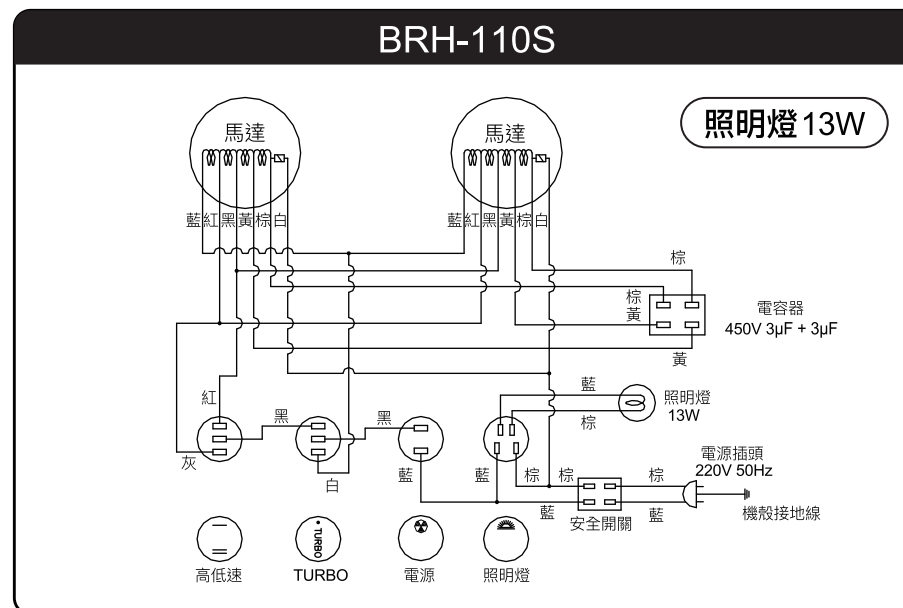


## 2 安裝施工說明

- 1 打開紙箱檢視保證書、說明書、風管座等附屬配件是否齊全。
- 2 安裝前先接上電源操作開關上之各項功能是否正常(馬達運轉、照明)。
- 3 在已選定的安裝位置上，以1/4"鑽頭鑽孔，將孔塞(俗稱塑膠栓)塞入孔內，並於配合吊鐵鑰匙孔之孔位鎖上木螺釘。
- 4 調整機體兩側之掛鉤(吊鐵)，將機體懸掛於木螺釘上，懸掛後，必需於吊鐵圓孔處再鎖上一螺釘與牆壁固定。
- 5 懸掛後，機體要保持一定水平。  
(安裝原則裡第3項已敘述)
- 6 排風管之安裝位置：(選擇性配備，本機不含風管等配備)
  - (一)排風管於爐台正對窗戶之安裝：
    - 敲一下方玻璃，安裝一塊穿有彎管大的合板，排風管由此穿出，不得損壞壁面。
  - (二)爐台不鄰近窗戶時：
    - 選擇最近爐台，可通向室外之窗戶，裝設排風管穿窗而出。
    - 或選最近爐台，可通向室外之牆壁(非隔間牆壁)打洞，裝設排風管穿牆而出。
- 7 鑽穿牆洞：
  - 先量好彎管正對牆面位置。
  - 然後在壁面畫好鑽洞範圍，再使用電鑽鑽穿牆壁。
  - 鑽洞時應要留意牆壁結構和資料，切勿破壞牆洞以外之壁面。
- 8 裝設排風管：
  - 將排風管之一端套入合適之風管座，並將風管座端固定於機體出風口及排風管另一端固定於排氣上。

註：有關排風管之裝設，以上說明僅供參考，施工需請專業人員處理或洽代理商。

## Circuit Diagram 配線圖



# 6 Troubleshooting

- Be reminded of turning off power supply when trouble is caught, please contact our service department.
- Disconnect the power supply before serving.

Status	Causes and Methods of Repairing	Tools Required
Power supply cord is out of order	<ul style="list-style-type: none"> <li>• Please contact our service dept or dealer for repair service.</li> <li>• Power supply cord specification: <b>H05W-F(227Z IEC53) 3G0.75mm2300/500V.</b></li> </ul>	Philips Screwdriver Plier
The bulb works but the motor doesn't run	<ul style="list-style-type: none"> <li>• Remove the fan guard and rotate fan by hand. Check if the fan is stuck, in this case, please adjust fan.</li> <li>• If not, that's caused by condenser problem please check following:               <ul style="list-style-type: none"> <li>i) If the starting wire (yellow one) is disengaged from condenser (refer to circuit diagram)</li> <li>ii) If starting wire is connected well, that condenser is damaged, replace with a new one.</li> </ul> </li> <li>• If the motor stops running and has a bad odor after a moment of operation, the motor wires may be burn out, replace the motor.</li> </ul>	1/4" Wrench Philips Screwdriver
Oil leaks from the housing cover	<ul style="list-style-type: none"> <li>• Remove fan guard, to check if two wind inlet washers and wind chamber are connected closely.</li> <li>• Remove bottom cover plate to check if the joint of wind chamber and top plate leak oil, if so, fill the leakage part with paint or glue.</li> </ul>	Philips Screwdriver
Machine vibration	<ul style="list-style-type: none"> <li>• If the motors were not firmly screwed, screw tighten them up.</li> <li>• If the fan is damaged or imbalanced, replace with a new one.</li> </ul>	Philips Screwdriver 1/4" Wrench
Suction becomes weak	<ul style="list-style-type: none"> <li>• The distance between range hood and range top is too far away.</li> <li>• Too many doors or windows around the hood to cause convection.</li> <li>• The machine is installed at front of window.</li> <li>• Please refer to the Installation Procedures and Safety Guides for good installation.</li> </ul>	—
Machine installed not horizontally	<ul style="list-style-type: none"> <li>• If machine is inclined to lateral side, just adjust hanger kits of both sides to equal height.</li> <li>• If machine is inclined to forward side, nail wooden screw down to the wall (wooden screw is going out of wall for about 0.5-1cm), or check if screws fitted to hanger kits are loosen or disconnected.</li> </ul>	Philips Screwdriver

# 3 使用方法

1 開始使用時，可依所需觸按機體前方之開關按鍵。

型號	按鍵說明	停止運轉
BRH-110S	 高低速  高速  電源  照明燈	—

2 集油盤及集油杯之裝掛：

- 當集油盤(或集油杯)內所盛之油汁已達八分滿，需隨時將油汁倒掉後用清潔劑清洗之，再裝回原固定位置。
- 集油盤拆卸時只需將手撐住集油盤下端，向左轉動，集油盤就脫離。裝回時只須將集油盤向右轉動，使油盤卡鉤勾住螺絲為止即可。
- 集油杯取出時只需用手將集油杯往前拉出，裝回時將集油杯置之集油槽中，推入至底即可。

3 本機可作排風機使用：

- 本機不僅使用排除廚房之油煙氣，平時亦可作排風機使用，調節並維持室內清新的空氣。

4 清潔方法：

- 先取下集油杯、集油盤，一手扶底板，再轉下螺絲，將機身底板卸下。
- 將接油盤除下，將鎖帽按順時針方向旋鬆，將風葉心旋下，取出風葉。
- 清潔時，內外表面可用軟布沾中性清潔劑擦拭，並避免刮花機體內外面。
- 清潔時，按上述相反的程序裝上底板。



注意

- 清潔抽油煙機前應先拔下插頭。請檢查底板上掛鉤與機體是否可靠連接，以策安全。

## 4 使用注意事項

---

- 1 電潔插座必須安裝接地線。
- 2 清潔抽油煙機前應先關掉電源。
- 3 可接駁獨立排風管將油煙排往室外，可提升吸力，故當開啟抽油煙機使用時，大部份油煙已被抽吸出室外，故此油杯油污量很少，請放心使用。
- 4 請勿直接潑水噴淋機體以免損壞電器機件。

## 5 保養

---

- 1 為發揮本機最佳性能，延長其使用壽命，應經常注意保養。
- 2 保養維修時應將插頭拔掉，切斷電源！
  - (一) 保養重於維修：
    - 常保機體外部潔淨，使用後請用乾布或沾有中性清潔劑之抹布，擦拭機體外殼與底板，經常保持乾淨以維護其美觀及衛生。
  - (二) 清除積存之油污：
    - 當集油盤(或集油杯)內所盛之油汁已達八分滿，須隨時將油汁倒掉，以免有溢出的可能。  
(集油盤、集油杯如何拆裝已於使用方法中敘述。)

## 4 Safety Guide

---

- 1 The range hood must be earthed.
- 2 Disconnect power supply before detaching the hood.
- 3 Connect the range hood with a separate pipe to exhaust soot to outdoor. Most of soot has been exhausted through the pipe to outdoor when range hood is turned on, so only the negligible oil will be left in the oil cup.
- 4 To protect the electrical parts, do not splash or spray the range hood with water.
- 5 Super Power Range Hood has high purification efficiency.





## 5 Maintenance

---

- 1 **Maintenance is more Important than Replacement.**  
Good maintenance gives the best performance and prolongs the life of machine. Please maintain your machine periodically.
- 2 **Turn off power supply before maintenance.**
  - A. Always keeps machine clean.
    - After each use, please wipe machine housing and bottom cover plate with a dry cloth or a wet cloth with mild detergent. Always keeps machine clean in order to maintain appearance and sanitation.
  - B. Empty dirty oil collectors when they are 4/5 full of oil, to avoid overflow.  
(Please see front page mentioning the installation and dismantling of oil collectors)

# 3 Operation of Your Machine

## 1 Follow your different enquiries to operate the switch as follows:

Models	Operation	Stop Moving
BRH-110S	 low middle speed  high speed  power  light	—

## 2 Installation and Dismantling of Round Oil Collector :

- Empty dirty oil collectors when they are 4/5 full of oil. Pour dirty oil and clean collectors with detergent, then put it back to original position.
- To remove round oil collector, just turn oil collector by counter clockwise direction. When want to put it back, just need to turn oil collector by clockwise direction to make sure it has been inserted into the slot with screw tighten together.
- To remove oil cup, just pull out oil cup when install back, put oil in the parking to push bottom side.
- Plastic oil cups are disposable for 4 pcs are enclosed with every machine. For some more inquiry, please contact our service department directly.

## 3 This machine can be used as a ventilator :

- This machine can remove soot in the kitchen, but also can be used as a ventilator to enhance indoor air circulation.

## 4 Cleaning : Take out the oil containers

- Hold the bottom cover plate and loosen the screws then detach it.
- Detach the oil tunnels and take out the fans by turning fan cups clockwise direction.
- Use soft cloth to clean the inner & outer surface with soft liquid detergent and then rinse with water. Avoid using a stiff brush, e.g. metal brush may scrub the surface.
- After cleaning, assemble the parts in reverse procedures as above shown.

## ⚠ CAUTIONS

- Make sure that the lower bottom cover is securely hooked with the hood body.

# 6 異常狀況之處理

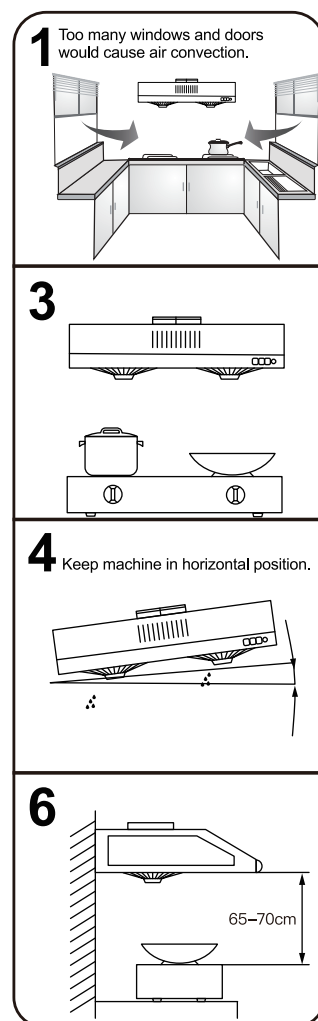
- 使用中發現異常狀況時，請將開關電源切掉，並洽請代理商服務部至府上維修。
- 處理異常狀況時請開關電源切掉。

狀況	原因及處置方法	使用工具
電源線損壞	<ul style="list-style-type: none"> <li>• 請就近洽本公司服務站或經銷商至府上維修。</li> <li>• 電源線規格： <b>H05W-F(227Z IEC53) 3G0.75mm2300/500V.</b></li> </ul>	十字起子 尖嘴鉗
燈亮馬達不轉	<ul style="list-style-type: none"> <li>• 拆下立體濾油網(保護網)，用手轉動風葉，如轉不動，查看風葉是否卡住。若是，請調整風葉。</li> <li>• 如風葉用手輕動皆能運轉自如，則是電容器的問題：               <ol style="list-style-type: none"> <li>1) 先看啟動線(黃色電線)是否脫離電容器(參考配線圖)</li> <li>2) 啟動線沒脫落，就是電容器已損壞，必須換電容器。</li> </ol> </li> <li>• 如按下馬達按鈕，馬達稍運轉即停止，而於馬達處可聞到一股燒焦臭味，則為馬達燒毀，必須換新馬達。</li> </ul>	1/4"板手 十字起子
底板外緣漏油	<ul style="list-style-type: none"> <li>• 拆下立體濾油網(保護網)，查看兩入風口墊圈與排風室是否密接受當。</li> <li>• 拆下底板，查看排風室外緣與頂板之結合處是否漏油；如是，即用油漆或強力膠予以補填。</li> </ul>	十字起子
機動震動	<ul style="list-style-type: none"> <li>• 查看馬達是否鎖緊。</li> <li>• 如馬達已鎖緊，則是風葉受損，不平穩轉動時會產生震動，應更換風葉。</li> </ul>	1/4"板手 十字起子
吸力不強	<ul style="list-style-type: none"> <li>• 抽油煙機與爐面的距離太高。</li> <li>• 抽油煙機周圍環境門窗通風多，對流太大。</li> <li>• 抽油煙機裝置在窗戶處。</li> <li>• 參考安裝原則及安裝注意事項進行安裝。</li> </ul>	—
機體裝設歪斜	<ul style="list-style-type: none"> <li>• 如系左右歪斜則由吊鐵調整左右高度。</li> <li>• 如系向前傾斜，則由木螺釘再行鎖入牆壁，(釘身大約0.5~1公分於壁外)，或查看吊鐵固定於機體的螺絲是否鬆落。</li> </ul>	十字起子



# 1 Preparation for Installation

- 1 Too many windows and doors surrounds machine will cause air convection, worsening good performance of wind-exhaust.
- 2 There shall be adequate ventilation of the room when the range hood is used with appliances burning gas or other fuels at the same time.
- 3 Machine shall be installed on frontal upper side of cooking area.
- 4 After installation, machine shall be kept in horizontal position, otherwise grease in oil collectors (either round or square ones) will be going to lower side and pouring out of collectors.
- 5 Distance between exhaust vent and machine shall be suitable so it can avoid air flow going inside of pipe to affect good efficiency of wind exhaust.
- 6 It's suggested to 65-70cm height between cooking surface and vertical front of machine.
- 7 Exhaust vent must not be discharged into a flue which is used for exhausting fumes from appliances burning gas or other fuels.



# 2 Installation Procedures

- 1 Open packing carton to check warranty card, instruction booklet, pipe adapter and so forth accessories are not lost.
- 2 Before installation, check every functions of switching are going well condition (such as motor running, illumination).
- 3 Select suitable position for installation, drilling hole on the wall by using 1/4" thread bit and put screw lock in side the hole to fit wooden screw with matching hanging hole.
- 4 Adjust hangers of both sides, hang on machine on to wooden screw, required in the hole at the hangers lock a wooden screw fixed to the wall after hang.
- 5 After machine is equipped, always keeps hood body in horizontal status. (same as front mentioned point 1.)
- 6 **Installation position of Exhaust Vent :**
  - 1) **Exhaust vent is located on front of cooking surface :**
    - Knock out one piece of glass, plywood is fitted to exhaust pipe to go through.
  - 2) **Never damage the wall Cooking surface do not close to window :**
    - Select the window is nearest to cooking surface, connect exhaust pipe to go through window to outdoor.
    - Select the window is nearest to cooking surface, drill hole on the wall to connect exhaust pipe to outdoor.
- 7 **Drill a hole on the wall :**
  - Measuring the position of elbow is on front of wall.
  - Circling the drilling range on the wall, use drill to dig a hole.
  - When drilling hole, be careful of wall construction and material in avoiding to damage other wall surface.

- 8 **Installation of Exhaust Pipe :**
  - Insert one side of exhaust pipe to the adapter fitted on the top vent of machine. Then, another side of pipe is fitted to go through exhaust hole.

## Note and Importance :

- All the installation has to be done by a qualified person in accordance with instructions mentioned in this booklet. Please always contact the department of our agent if you have any questions.

